

DESCRIPTION

The Standard Parabolic is a value driven luminaire designed and manufactured for value engineered applications. The luminaire features a nominal 3" deep precision cell parabolic louver and a 4-3/4" deep paracontoured housing for glare control and optimum performance. The series is compatible with all of today's popular ceiling systems and is available with a number of options and accessories for application versatility.

2EP3-IC is rated for installations when the housing is in direct contact with insulation. The Standard Parabolic is designed to offer maximum value in price sensitive applications. The luminaire is an excellent choice for commercial office spaces, schools, hospitals or retail merchandising areas.

SPECIFICATION FEATURES

Construction

4-3/4" deep, para-contoured housing die formed of code gauge, prime cold rolled steel. Die embossed housing has full length die formed stiffeners for added strength. Contoured ballast/wireway cover is easily removed without tools. Die formed captive lampholder bracket fully encloses lampholder wiring permitting easy lampholder replacement. Heavy end plates are securely attached with interlocking tabs and screws. Four-auxiliary fixture end suspension points provided. KOs for continuous row wiring. End plates have integral Grid-Lock feature for safety and convenience.

Electrical**

Ballasts are CBM/ETL Class "P" and are positively secured by mounting bolts. Pressure lock lampholders. UL/CUL listed for Type IC Recessed Luminaire (Rated for direct contact with insulation). Suitable for damp locations.

Finish

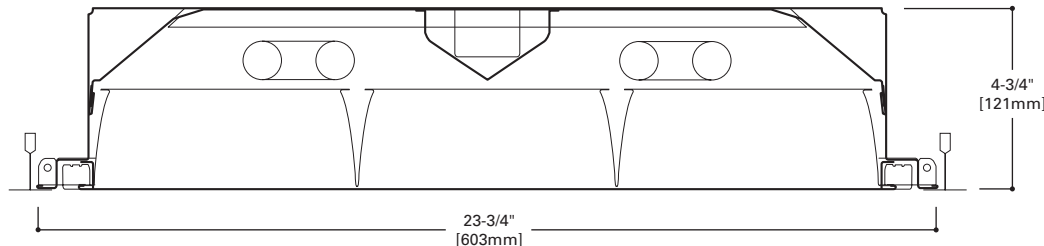
Lighting grade, baked white enamel finish. Multistage, iron phosphate pretreatment ensures maximum bonding and rust inhibition.

Hinging/Latching

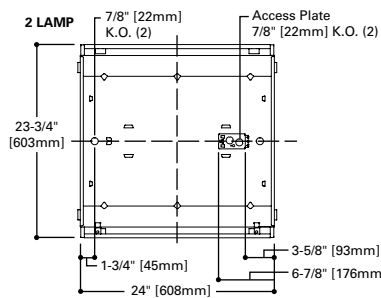
Positive spring loaded, self locking, steel latches. Safety lock T-hinges allow hinging and latching from either side.

Louver

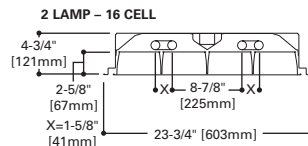
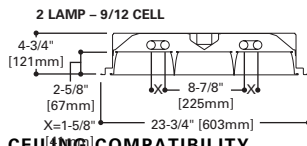
Die formed of low iridescent, vertical grain anodized aluminum. Finish is Anodic oxide coating. Accurate precision parabolic cells are held in place with interlocking feature. True-cut mitered corners. Black reveal with integral mechanical light seal around entire perimeter of louver. Louver protected from construction contaminants by polyethylene cover.



MOUNTING DATA



LAMP CONFIGURATIONS



CEILING COMPATIBILITY

G	G	G	F	MZ	Ceiling Type	Trim Type
Grid/Lay-in Standard	Concealed T	Slot Grid	Aluminum Flange Trim With Supporting Swing Gates	Modular Trim With Supporting Swing Gates	Exposed Grid	G
					Concealed T	G
					Slot Grid	G
					Flange	F
					Concealed "T" or "Z"	MZ
					Metal Pan	MZ
					(Verify compatibility/ consult factory.)	

Catalog #	Type
Project	
Comments	Date
Prepared by	



2EP3GX-IC
2U1-5/8

9, 12, 16 Cell

2' X 2' PARABOLIC
2 LAMP T8
SEMI-SPECULAR,
SPECULAR OR WHITE
PAINTED LOUVER

Paralux III
Recessed Static or
Air Supply Troffer

For Use in
Insulated Ceilings

ENERGY DATA

Input Watts:
EB Ballast & STD Lamps
2U1-5/8 (61)

Luminaire Efficacy Rating
LER = FP-55

Catalog Number: 2EP3GX-IC-2U1-5/8S331

Yearly Cost of 1000 lumens,
3000 hrs at .08 KWH = \$4.36

**Reference the lamp/ballast data in the Technical Section for specific lamp/ballast requirements.

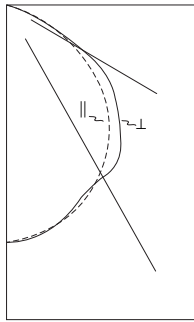
LAMPS CONTAIN MERCURY. DISPOSE ACCORDING TO LOCAL, STATE OR FEDERAL LAWS

LINEAR DISCONNECT

Safe and convenient means of disconnecting power.



ADF110372
October 14, 2019 1:34 PM



2EP3GX-IC-2U1-5/8S331
 Electronic Ballast
 FBO31/35K Lamps
 2750 Lumens
 Spacing criterion:
 (II) 1.2 x mounting
 height, (L) 1.4 x
 mounting height
 Efficiency 60.7%
 Test Report:
 2EP3GXIC2U158S331IES
 LER = FP-55
 Yearly Cost of 1000
 lumens, 3000 hrs at
 .08 KWH = \$4.36

Candlepower

Angle	Along II	45°	Across L
0	1393	1393	1393
5	1387	1385	1383
10	1358	1358	1357
15	1320	1310	1308
20	1269	1251	1286
25	1206	1193	1327
30	1132	1169	1307
35	1046	1140	1226
40	950	1058	1173
45	841	948	1126
50	718	849	1051
55	577	728	874
60	389	519	506
65	177	238	146
70	58	58	46
75	20	20	23
80	8	8	11
85	2	2	4
90	0	0	0

Coefficients of Utilization

rc	Effective floor cavity reflectance																		
	80%		70%		50%		30%		10%		0%								
rw	70	50	30	10	70	50	30	10	50	30	10	0							
RCR	0	72	72	72	72	71	71	71	67	67	67	62	62	62	61				
	1	67	65	63	61	66	64	62	60	61	60	58	59	58	56	57	56	55	54
	2	62	58	54	51	61	57	54	51	55	52	50	53	51	49	51	49	48	46
	3	57	52	47	44	56	51	47	43	49	45	43	47	44	42	46	43	41	40
	4	53	46	41	38	51	45	41	37	44	40	37	42	39	36	41	38	36	35
	5	48	41	36	33	47	41	36	32	39	35	32	38	35	32	37	34	31	30
	6	45	37	32	29	44	37	32	28	36	31	28	35	31	28	34	30	28	27
	7	42	34	29	25	41	33	29	25	32	28	25	32	28	25	31	27	25	24
	8	39	31	26	23	38	30	26	23	30	25	22	29	25	22	28	25	22	21
	9	36	28	24	20	35	28	23	20	27	23	20	27	23	20	26	23	20	19
	10	34	26	21	18	33	26	21	18	25	21	18	25	21	18	24	21	18	17

Zonal Lumen Summary

Zone	Lumens	%Lamp	%Fixture
0-30	1073	19.2	31.6
0-40	1779	31.8	52.4
0-60	3154	56.3	92.8
0-90	3397	60.7	100.0
0-180	3397	60.7	100.0

Typical VCP Percentages

Room Size (Ft.)	Height Along		Height Across	
	8.5'	10.0'	8.5'	10.0'
20 x 20	75	69	74	67
30 x 30	82	76	81	75
30 x 60	85	81	84	79
60 x 30	85	80	83	78
60 x 60	87	84	86	82

ORDERING INFORMATION

SAMPLE NUMBER: 2EP3GAX-2U1-5/8S331-UNV-EB81-U

<p>Rating Blank= Standard ATW-SW4= Chicago Rated</p> <p>HR=Heat Removal⁽¹⁾</p> <p>Width 2=2' Width</p> <p>EP=Paralux Louver</p> <p>3=3" Louver Depth</p> <p>Trim Type G=Grid/Lay-in (Standard) G=Concealed T/Slot Grid⁽⁷⁾ F=Aluminum Flange Trim⁽⁸⁾ MZ=Modular Trim</p> <p>AX=Air Supply Floating Louver X=Blank Side/Floating Louver - Non-Air Supply (Omit A) AVX=Air Supply Floating Louver with Directional Air Vane (Add V)</p> <p>IC=IC Rated</p>	<p>Number of Lamps 2=2 Lamps 3=3 Lamps⁽³⁾</p> <p>Wattage (Length) U1-5/8=31W T8 (24")</p> <p>Louver Color S=Silver W=White</p> <p>Cell Configuration 33=3 Rows of 3, 9 Cell 34=3 Rows of 4, 12 Cell 44=4 Rows of 4, 16 Cell</p> <p>Louver Finish I=Semi-Specular/Haze (Low Iridescent) Standard (Silver Only) P=Painted (White only)</p> <p>Option - Aluminum Flange Trim⁽⁸⁾ Blank=SW (Single White) Type Color 'S' Single 'N' Natural 'R' In Row 'W' White 'E' End of Row</p>	<p>Voltage⁽⁴⁾ 120V=120 Volt 277V=277 Volt 347V=347 Volt UNV=Universal Voltage 120-277⁽⁵⁾</p> <p>Options GL=Single Element Fuse GM=Double Element Fuse WTR=White Reveal Lamps=Lamps Installed (refer to lamp ordering options) Flex=Flex Installed (Reference Flex ordering information) EL=Emergency Installed^{(6), (9)}</p>	<p>Ballast Type EB8 =T8 Electronic Start. Total Harmonic Distortion < 10%</p> <p>No. of Ballast 1, 2 or 3</p> <p>EB8 /PLUS= T8 Electronic Start. Total Harmonic Distortion < 10% High Ballast Factor >1.15</p> <p>No. of Ballast 1, 2 or 3</p> <p>ER8 =T8 Electronic Program Rapid Start. Total Harmonic Distortion < 10%</p> <p>No. of Ballast 1, 2 or 3</p>	<p>Options PAF=Painted After Fabrication REP=Riveted Endplates</p> <p>Packaging U=Unit Pack PAL=Job Pack, out of carton PALC=Job Pack, in carton</p>
--	--	---	--	--

ACCESSORIES

EQ-CLIP-U=T-BAR Safety Earthquake Clips⁽²⁾

NOTES: ⁽¹⁾ Integral end plate grid lock feature not available in heat removal. ⁽²⁾ An EQ Grid Clip is recommended for all 9/16" ceiling systems. Four required per fixture. ⁽³⁾ Standard off-center ballast on 3-lamp fixtures. ⁽⁴⁾ Products also available in non-US voltages and frequencies for international markets. ⁽⁵⁾ Not available when specifying emergencies, voltage must be specific. ⁽⁶⁾ Fixtures equipped with "EL" option may require a 5-1/2" housing depth. If installing in field, must use low profile battery pack. ⁽⁷⁾ Louver is recessed by 5/16" in Concealed T or Slot Grid T. ⁽⁸⁾ Specify row configuration, type in catalog number when ordering complete fixture. ⁽⁹⁾ Please specify required voltage, 120V or 277V.

Specifications & dimensions subject to change without notice. Consult your Cooper Lighting Solutions Representative for availability and ordering information.

SHIPPING DATA

Catalog No.	Wt.
2EP3GX-IC-2U1-5/8S331	28 lbs.
2EP3GX-IC-2U1-5/8S441	28 lbs.



Cooper Lighting Solutions
 1121 Highway 74 South
 Peachtree City, GA 30269
 P: 770-486-4800
 www.cooperlighting.com

Specifications and dimensions subject to change without notice.

ORDERING INFORMATION

Sample Number: 2EP3GAX-IC-2UI-5/8S23I-120V-EB81-U

Rating Blank=Standard NY=New York City Rated ATW-SW4=Chicago Rated	Cell Configuration 33 = 3 Rows of 3, 9 Cell (2'x2') 34 = 3 Rows of 4, 12 Cell (2'x2') 44 = 4 Rows of 4, 16 Cell (2'x2')	Voltage ⁷ 120V = 120 Volt 277V = 277 Volt 347V = 347 Volt UNV = Universal ⁸ Voltage 120-277	Ballast Type ⁷ EB8 = T8 Electronic Start. Total Harmonic Distortion < 10% EB8_/_Plus = T8 Electronic Start. Total Harmonic Distortion < 10%. High Ballast Factor > 1.15. ER8 = T8 Electronic Program Rapid Start Total Harmonic Distortion < 10%
Heat Removal HR=Heat Removal ¹	Louver Finish I= Semi-Specular/Haze (Low Iridescent) Standard P=Painted	Options GL = Single Element Fuse GM = Double Element Fuse WTR = White Reveal	Number of Ballasts 1 = 1 Ballast 2 = 2 Ballast
Width 2=2' Width	Option - Aluminum Flange Trim ⁵ Blank = SW (Single White) SN = Single, Natural Finish RN = In Row, Natural Finish RW = In Row, White Finish EN = End of Row, Natural Finish EW = End of Row, White Finish	Lamps = Lamps Installed (refer to lamp ordering options) Flex = Flex Installed (Reference Flex ordering information) EL = Emergency ⁹ Installed	Options PAF = Painted After Fabrication RLS = Rotor Lock Socket (T8 Lamp only)
Series EP3=Paralux III			Packaging U=Unit Pack PAL = Job Pack, out of carton PALC = Job Pack, in carton
Trim Type G=Grid/Lay-in -2 Standard T=Concealed T/ ^{3,4} Slot Grid F=Aluminum ⁵ Flange Trim MZ=Modular Trim			
Air Supply AX=Air Supply Floating Louver X=Blank Side/Floating Louver - Non Air Supply AVX=Air Supply Floating Louver w/Directional Air Vane			
Type IC=IC Rated			
Number of Lamps 2 Lamps			
Wattage U15/8=31W T8 (24")			
Louver Color S = Silver W = White			

ACCESSORIES

EQ-CLIP-U-T-BAR Safety Earthquake Clips ³

Note: An EQ Grid Clip is recommended for all 9/16" ceiling systems. Four required per fixture.

- Notes:**
- 1 Integral End Plate Grid Lock feature not available in Heat Removal
 - 2 May also be used with Concealed T or Slot Grid T. Louver will be recessed by 5/16". Housing depth = 5-1/2".
 - 3 An EQ Grid Clip is recommended for all 9/16" ceiling systems. Four required per fixture.
 - 4 Louver height = 3", Housing depth = 5-1/2".
 - 5 Specify row configuration, type in catalog number when ordering complete fixtures.
 - 6 Standard off-center ballast on 3 lamp fixtures.
 - 7 Products also available in non-US voltage and frequencies for international markets
 - 8 Not available when specifying emergencies, voltage must be specific
 - 9 Fixtures equipped with "EL" option may require a 5-1/2" housing depth. If installing in field, must use low profile battery pack.