

DESCRIPTION

The Paralux III Series features recessed aesthetics and the latest in energy efficient technology. The luminaire incorporates a true 3" deep precision cell white louver into a nominal 5-1/2" deep para-contoured fixture housing. This combination results in an apparent brightness fixture that blends well with the white components of the ceiling system. The series is compatible with all of today's popular ceiling systems and is available with a number of options and accessories for application versatility.

APPLICATION

The Paralux III white louver series, a Designer Parabolic, combines functional and aesthetically pleasing features for today's unique interior specifications. This unique designer look is now specified in many of today's retail and creative merchandising environments. Attractive and aesthetically pleasing, this product has all the desired features to satisfy the most discriminating designer when the specification calls for a White Parabolic.

SPECIFICATION FEATURES

A...Construction

Nominal 5-1/2" deep, para-contoured housing, die formed of code gauge, prime cold rolled steel. Die embossed housing has full length die formed stiffeners for added strength. Contoured ballast/wireway cover is easily removed without tools. Die formed captive lampholder bracket fully encloses lampholder wiring permitting easy lampholder replacement. Heavy end plates are securely attached with interlocking tabs and screws. Four auxiliary fixture end suspension points provided. KOs for continuous row wiring. End plates have labor saving integral Grid-Lock feature for safety and convenience. Housing features enable fixture to be converted from Grid to T-option or vice versa in the field.*

B...Electrical**

Ballasts are CBM/ETL Class "P" and are positively secured by mounting bolts. Pressure lock lampholders. UL/CUL listed. Suitable for damp locations.

C...Finish

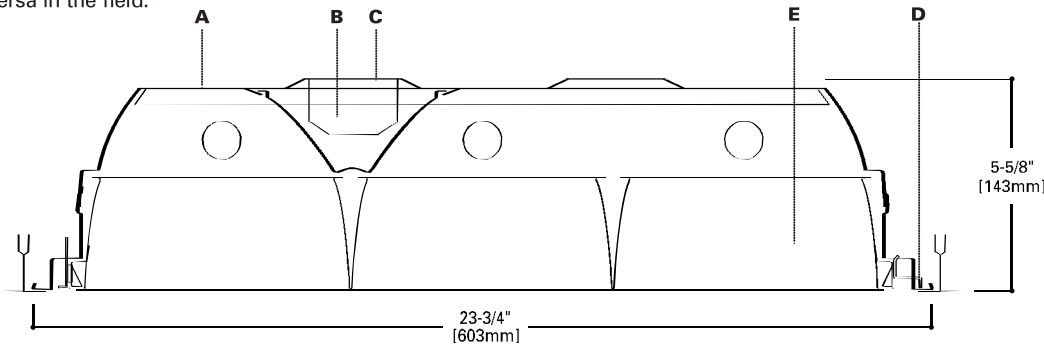
Lighting grade, baked white enamel finish. Multistage, iron phosphate pretreatment ensures maximum bonding and rust inhibition.

D...Hinging/Latching

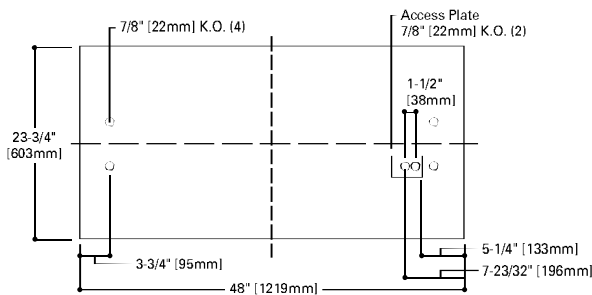
Positive cam action spring loaded, self locking, black steel latches. Safety lock T-hinges allow hinging and latching either side.

E...Louver

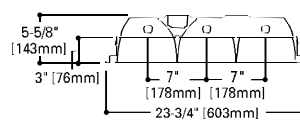
Die formed of aluminum with baked white, lighting grade finish. Accurate precision parabolic cells are held in place with interlocking feature. True-cut mitered corners. Black reveal with integral mechanical light seal around entire perimeter of louver. Louver protected from construction contaminants by polyethylene cover.



MOUNTING DATA



LAMP CONFIGURATIONS



CEILING COMPATIBILITY

G
Grid/Lay-in
Standard

T
Concealed T

T
Slot Grid

F
Flange Trim
With Supporting
Swing Gates

MZ
Modular Trim
With Supporting
Swing Gates

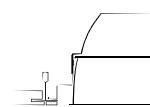
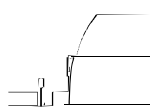
**Ceiling
Type**

**Trim
Type**

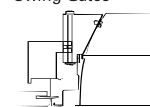
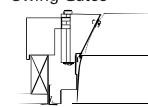
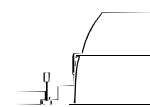
Exposed Grid
Concealed T
Slot Grid
Flange
Concealed Spline
Metal Pan

G
G or T
G or T
F
MZ
MZ

(Verify compatibility / consult
Pre Sales Technical Support.)



Optional "TK" Trim Kit



COOPER LIGHTING

Catalog #	Type
2EP3GAX332W36PUNVEL4OSQHE3X32T8UNVISN	
Project	
Comments	
Prepared by	Date



**2EP3GAX340
332**

18 Cell

**2' X 4' PARABOLIC
3 LAMP
WHITE LOUVER**

Paralux III
Recessed Static or
Air Supply Troffer



ENERGY DATA

Input Watts:

EB Ballast & STD Lamps

340 (110)

332 (91)

ES Ballast & STD Lamps

340 (136)

332 (108)

Luminaire Efficacy Rating

LER = FP-62

Catalog Number:

2EP3GAX-332W36P

Yearly Cost of 1000 lumens,

3000 hrs at .08 KWH = \$3.87

*Convertibility applies to housing only.
Appropriate shielding media assemblies
must be utilized.

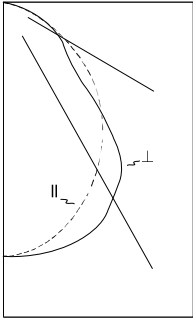
**Reference the lamp/ballast data in the
Technical Section for specific lamp/bal-
last requirements.

ADF020560

(Supersedes ADF991692)



PHOTOMETRICS



2EP3GAX-332W36P
Electronic Ballast
F32T8/35K Lamps
2800 Lumens

Spacing criterion:
(ll) 1.1 x mounting height, (⊥) 1.3 x mounting height

Efficiency 72.2%

Test Report:
2EP3GX332W36P.IES

LER = FP-62

Yearly Cost of 1000 lumens, 3000 hrs at .08 KWH = \$3.87

Coefficients of Utilization

rc	Effective floor cavity reflectance																	
	80%				70%				20%									
rw	70	50	30	10	70	50	30	10	50	30	10	50	30	10	50	30	10	0
RCR																		
0	86	86	86	86	84	84	84	84	80	80	80	77	77	77	74	74	74	72
1	80	77	74	72	78	75	73	71	72	70	69	70	68	67	67	66	65	63
2	74	69	65	61	72	68	64	60	65	62	59	63	60	58	61	58	57	55
3	68	62	57	53	67	61	56	52	59	55	51	57	53	51	55	52	50	48
4	63	56	50	46	62	55	49	45	53	48	45	51	47	44	50	46	44	42
5	58	50	44	40	57	49	43	39	48	43	39	46	42	39	45	41	38	37
6	54	45	39	35	53	44	39	35	43	38	34	42	38	34	41	37	34	32
7	50	41	35	31	49	40	35	31	39	34	30	38	34	30	37	33	30	29
8	46	37	31	27	45	36	31	27	35	30	27	34	30	27	34	29	26	25
9	42	33	27	23	41	33	27	23	32	27	23	31	27	23	30	26	23	22
10	40	30	25	21	39	30	24	21	29	24	21	28	24	21	28	24	21	19

Zonal Lumen Summary

Zone	Lumens	%Lamp	%Fixture
0-30	2049	24.4	33.8
0-40	3298	39.3	54.4
0-60	5195	61.8	85.6
0-90	6065	72.2	100.0
0-180	6065	72.2	100.0

Typical VCP Percentages

Room Size (Ft.)	Height Along		Height Across	
	8.5'	10.0'	8.5'	10.0'
20 x 20	65	69	65	71
30 x 30	61	64	61	63
30 x 60	57	58	56	57
60 x 30	64	66	64	66
60 x 60	59	59	58	58

Candela

Angle	Along ll	45°	Across ⊥
0	2676	2676	2676
5	2644	2654	2675
10	2568	2609	2672
15	2461	2540	2656
20	2330	2448	2613
25	2179	2330	2523
30	2011	2188	2357
35	1828	2004	2203
40	1630	1783	1768
45	1419	1572	1207
50	1202	1211	930
55	983	826	807
60	758	630	696
65	528	501	535
70	346	371	394
75	241	254	271
80	148	155	165
85	66	68	72
90	0	0	0

ORDERING INFORMATION

SAMPLE NUMBER: 2EP3GAX-332W36P-120V-EB81-U

<p>HR=Heat Removal⁽¹⁾</p> <p>HRDO=Heat Removal Damper Open</p> <p>HRDC=Heat Removal Damper Closed</p>	<p>Number of Lamps⁽⁴⁾</p> <p>3 lamps (Not included)</p>	<p>Voltage⁽⁵⁾</p> <p>120V=120 Volt</p> <p>277V=277 Volt</p> <p>347V=347 Volt</p> <p>UNV=Universal Voltage 120-277⁽⁶⁾</p>	<p>Ballast Type⁽⁵⁾</p> <p>LE3=T12 Magnetic Energy Saving</p> <p>LEOC8=T8 Magnetic Energy Saving</p> <p>EB8=T8 Electronic Instant Start.</p> <p>Total Harmonic Distortion < 20%</p> <p>No. of Ballast 1, 2 or 3</p> <p>EB8_/PLUS=T8 Electronic Instant Start.</p> <p>High Ballast Factor >1.13. Total Harmonic Distortion < 20%</p> <p>No. of Ballast 1, 2 or 3</p> <p>ER8=T8 Electronic Program Rapid Start.</p> <p>Total Harmonic Distortion < 10%</p> <p>No. of Ballast 1, 2 or 3</p> <p>TEB8=T8 Electronic Instant Start. Total Harmonic Distortion < 10%</p> <p>No. of Ballast 1, 2 or 3</p> <p>EB2=T12 Electronic Rapid Start.</p> <p>No. of Ballast 1 or 2</p> <p>DLS=Digital Lighting System Dimming</p>	<p>Options</p> <p>PAF=Painted After Fabrication</p> <p>RIF1=Radio Interference Suppressor</p> <p>FR=Suitable for Fire Rated Applications</p> <p>EQ=T-BAR Safety Earthquake Clips⁽²⁾</p> <p>MEP=Modified End Plate/ For End Filler Applications (See Accessory Section)</p> <p>20GA/REP=20 Gauge Riveted Endplates. For use in New York City.</p> <p>RLS=Rotor-Lock Socket (T8 Lamps Only)</p> <p>(Additional options available. See Accessory Section)</p>	<p>Packaging</p> <p>U=Unit Pack</p> <p>PAL=Job Pack, out of carton</p> <p>PALC=Job Pack, in carton</p>
<p>Width</p> <p>2=2' Width</p>	<p>Wattage (Length)</p> <p>32=32W T8 (48")</p> <p>40=40W T12 (48")</p>	<p>Options</p> <p>GL=Single Element Fuse</p> <p>GM=Double Element Fuse</p> <p>WTR=White Reveal</p> <p>Lamps=Lamps Installed</p> <p>Flex=Flex Installed</p> <p>Emergency=EM Installed</p>			
<p>EP=Paralux Louver</p>	<p>Louver Color</p> <p>W=White</p>				
<p>3=3" Louver Depth</p>	<p>Cell Configuration</p> <p>36=3 Rows of 6, 18 Cell</p>				
<p>Trim Type</p> <p>G=Grid/Lay-in (Standard)</p> <p>G or T=Concealed T</p> <p>G or T=Slot Grid⁽²⁾</p> <p>F=Flange Trim</p> <p>MZ=Modular Trim</p> <p>Convertible Fixture⁽³⁾ Standard G (Grid) Type-Fixtures can be field converted to T-option or vice-versa. Fixture also adaptable with flanged or modular trims.</p>	<p>Louver Finish</p> <p>P=Painted (White only)</p>				
<p>AX=Air Supply Floating Louver</p> <p>X=Blank Side/Floating Louver - Non-Air Supply (Omit A)</p> <p>AVX=Air Supply Floating Louver with Directional Air Vane (Add V)</p>					

OSI
QHE3X32T8UNVISN
SC BALLAST

NOTES: ⁽¹⁾Integral end plate grid lock feature not available in heat removal. ⁽²⁾An EQ Grid Clip is recommended for all 9/16" ceiling systems. ⁽³⁾Convertibility applies to housing only, appropriate shielding media assemblies must be utilized. ⁽⁴⁾Standard off-center ballast on 3-lamp fixtures. ⁽⁵⁾Products also available in non-US voltages and frequencies for international markets. ⁽⁶⁾Not available when specifying emergencies, voltage must be specific.

For complete product data, reference the Fluorescent Specification binder. Specifications & dimensions subject to change without notice. Consult your Cooper Lighting Representative for availability and ordering information.

SHIPPING INFORMATION

Catalog No.	Wt.
2EP3GAX-332W36P	42 lbs.