

## DESCRIPTION

GC8 is a premium grade specification lensed troffer series. This innovative, high quality luminaire is dedicated to the latest T8 lamp and micro electronic ballast technology for optimal performance and energy efficiency. The GC8 is compatible with all of today's popular ceiling systems and is available with a number of options and accessories for application versatility.

The GC8 series features efficiency, quality and performance. The series is an excellent choice for commercial office spaces, schools, hospitals or retail merchandising areas.

<b>Catalog #</b>		<b>Type</b>
<b>Project</b>		
<b>Comments</b>		<b>Date</b>
<b>Prepared by</b>		

## SPECIFICATION FEATURES

### Construction

Rigid housing is die formed of code gauge prime cold rolled steel and features full length die-formed stiffeners and unibody endplate for added strength. Side flanges are hemmed. Innovative design provides superior lens brightness uniformity and visual comfort. Micro ballast cover\*\*\* reduces ballast shadow for superior lens brightness uniformity and is easily removed without tools. Die formed captive lampholder brackets fully enclose lampholder wiring permitting easy lampholder replacement. Unibody endplates are securely attached with interlocking tabs and screws. Four auxiliary fixture end suspension points provided. Ample KOs are provided for continuous row wiring. Endplates have integral Grid-lock feature for safety and convenience.

### Electrical

Ballasts are CBM/ETL Class "P" and are positively secured by mounting bolts. Rotor-lock T8 lampholders. Biaxial models use 2G11 base lampholders with double-edge wiping action pressure-lock contacts and horizontally oriented lamp support clips. UL/CUL listed. Suitable for damp locations.\*\*

### Finish

Multistage, iron phosphate pretreatment ensures maximum bonding and rust inhibition. Housing and ballast cover finished with new 90% reflective white enamel for superior performance. "PAF" Painted After Fabrication option also available.

### Hinging/Latching

Positive Cam latch with baked white enamel finish. Safety-lock T-hinges allow hinging and latching either side.

### Frame/Shielding

Die formed, heavy gauge, flat steel door with reinforced mitered corners and baked white enamel finish. Flat and regressed aluminum doors also available. Positive light seals. Light stabilized, acrylic prismatic lens. Standard #12 pattern. Numerous additional shielding options available.

### Controls

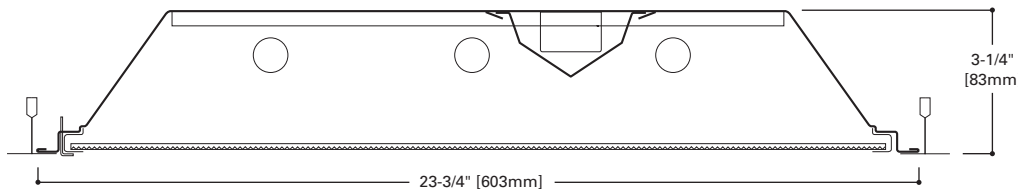
Fifth Light ballast options are offered for both 0-10V continuous dimming and DALI applications. Combine with energy-saving products like occupancy sensors, daylighting controls, and lighting relay panels from Cooper Controls ([www.coopercontrol.com](http://www.coopercontrol.com)) to maximize energy savings.



**2GC8**  
317  
3BX40  
3U1-5/8

2' X 2' TROFFER  
3 LAMPS

Specification T8 Troffer



## ENERGY DATA

Input Watts:

**EB Ballast & STD Lamps**  
317 (56), 3BX40 (98), 3U1-5/8 (88)

**ES Ballast & STD Lamps**  
317 (68), 3BX40 (125), 3U1-5/8 (105)

Luminaire Efficacy Rating

LER = FL-63

Catalog Number: 2GC8-317

Yearly Cost of 1000 lumens,  
3000 hrs at .08 KWH = \$3.81

\*Reference the lamp/ballast data in the Technical Section for specific lamp/ballast requirements.

\*\*Consult Pre Sales Technical Support.

\*\*\*Full sized ballast cover for biaxial lamps and emergency option may apply.

\*\*\*\*When ordering Flange Kit for installation in drywall ceilings, see options and accessories compatibility section and ordering logic.

LAMPS CONTAIN MERCURY. DISPOSE ACCORDING TO LOCAL, STATE OR FEDERAL LAWS

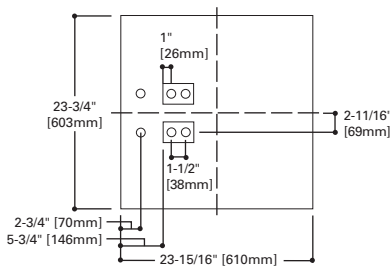
**LINEAR DISCONNECT**

Safe and convenient means of disconnecting power.

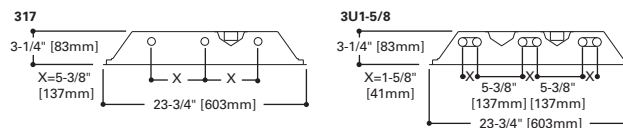


ADF041298

## MOUNTING DATA



## LAMP CONFIGURATIONS

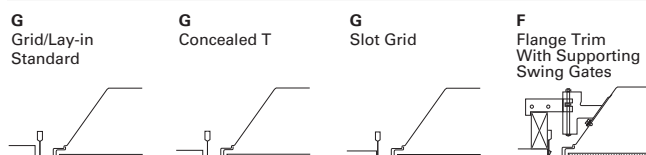


## DOOR FRAMES

GC8 Flat, White Steel  
GC8FA Flat, Extruded White Aluminum  
GC8RA Deep, Regressed, Extruded Natural Aluminum



## CEILING COMPATIBILITY



Ceiling Type	Trim Type
Exposed Grid	G
Concealed T	G
Slot Grid	G
Flange	F

(Verify compatibility/ consult factory.)



**ORDERING INFORMATION**

SAMPLE NUMBER: 2GC8-317A-UNV-EB81-U

**Rating<sup>(6)</sup>**  
**Blank**= Standard  
**ATW-SW4**= Chicago Rated

**Width**  
**2=2' Width**

**Trim Type**  
**G=Grid/Lay-in<sup>(1)</sup>** (Standard)  
**G**=Concealed T  
**G**=Slot Grid  
**F**=Flange Trim

**Series**  
**C8=Specification T8 Troffer**

**Standard**=Flat White Steel Door (Leave Blank)  
**FA**=Flush White Extruded Aluminum c/w Spring Latch  
**RA=Regressed White Extruded Aluminum**  
**FAN**=Flush Natural Anodized Extruded Aluminum  
**RAN**=Regressed Natural Anodized Extruded Aluminum  
**FAB**=Flush Black Extruded Aluminum  
**RAB**=Regressed Black Extruded Aluminum

**Number of Lamps<sup>(2)</sup>**  
**3 Lamps** (Not included)

**Wattage**  
**17**=17W T8 (24")  
**U1-5/8**=31W T8 (24")<sup>(10)</sup>  
**BX40**=40W Biax (24")

**Shielding**  
**A**=#12 Acrylic Pattern  
**A125**=#12 Pattern Acrylic (.125" Thickness)  
**A19/156**=#19 Pattern Acrylic (.156" Thickness)  
**PB1S**=1/2" x 1/2" x 1/2" Silver Parabolic Louver (Styrene)

**Option - Aluminum Flange Trim<sup>(7)</sup>**  
**Blank**=SW (Single White)  
 Type Color  
 'S' Single 'N' Natural  
 'R' In Row 'W' White  
 'E' End of Row

**Voltage<sup>(3)</sup>**  
**347V**=347 Volt  
**UNV=Universal Voltage 120-277<sup>(4)</sup>**

**Options**  
**GL**=Single Element Fuse  
**GM**=Double Element Fuse  
**Lamps**=Lamps Installed  
**Flex**=Flex Installed  
**EL**=Emergency Installed

**Ballast Type**  
**EB8**=T8 Electronic Start. Total Harmonic Distortion < 10%  
**EB8\_/PLUS**= T8 Electronic Start. Total Harmonic Distortion < 10%. High Ballast Factor > 1.15.  
**ER8**= T8 Electronic Program Rapid Start. Total Harmonic Distortion < 10%  
**High Performance T8 Ballasts**  
**HB8**=T8 Electronic Instant Start. Total Harmonic Distortion < 10%. Standard Ballast Factor .86 - .88  
**HB8\_L**=T8 Electronic Instant Start. Total Harmonic Distortion < 10%. Low Ballast Factor .77 - .82  
**HB8\_N**=T8 Electronic Instant Start. Total Harmonic Distortion < 10%. Normal Ballast Factor 1.0  
**HB8\_H**=T8 Electronic Instant Start. Total Harmonic Distortion < 10%. High Ballast Factor 1.15 - 1.20  
**HR8**=T8 Electronic Program Rapid Start. Total Harmonic Distortion < 10%. Standard Ballast Factor .86 - .88  
**HR8\_DIM**=T8 Electronic Program Rapid Start. Total Harmonic Distortion < 10%. Step Dimming. Ballast Factor .88  
**HR8\_L**=T8 Electronic Program Rapid Start. Total Harmonic Distortion < 10%. Low Ballast Factor .71 - .79  
**HR8\_H**=T8 Electronic Program Rapid Start. Total Harmonic Distortion < 10%. High Ballast Factor 1.15 - 1.20  
**Fifth Light DALI Ballasts<sup>(9)</sup>**  
**5LT8**=T8 DALI Program Rapid Start. Total Harmonic Distortion < 10%. Ballast Factor 1.0

**Options**  
**LAO**=Less Access Opening<sup>(8)</sup>  
**FR**=Fire Rated Label  
**REP**=Riveted End Plates  
**PAF**=Painted After Fabrication

**Packaging**  
**U**=Unit Pack  
**PAL**=Job Pack, out of carton  
**PALC**=Job Pack, in carton

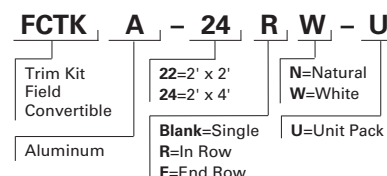
**Number of Ballasts**  
**1**=1 Ballast  
**2**=2 Ballasts  
**3**=3 Ballasts

**NOTES:** <sup>(1)</sup>An EQ Grid Clip is recommended for all 9/16" ceiling systems. <sup>(2)</sup>Standard off-center ballast compartment on 3-lamp fixtures. <sup>(3)</sup>Products also available in non-US voltages and frequencies for international markets. <sup>(4)</sup>Not available when specifying emergencies, voltage must be specific. <sup>(5)</sup>Consult Pre Sales Technical Support. <sup>(6)</sup>For NYC rated product, see separate specification sheets. <sup>(7)</sup>Specify row configuration, type in catalog number when ordering complete fixture. <sup>(8)</sup>Not available in UNV voltages. Must specify voltage. <sup>(9)</sup>For a complete listing of Fifthlight Technology products and other solutions from Cooper Controls, visit www.coopercontrol.com. <sup>(10)</sup>Fifthlight ballast option not available.

Specifications & dimensions subject to change without notice. Consult your Cooper Lighting Representative for availability and ordering information.

**ACCESSORIES**

**EQ-CLIP-U**=T-BAR Safety Earthquake Clips<sup>(1)</sup>  
**FCTKA-22W-U**=Field Installed Flange Kit



**SHIPPING INFORMATION**

Catalog No.	Wt.
2GC8-3U1-5/8A	12 lbs.
2GC8-317A	12 lbs.