

DESCRIPTION

SNLED Base is a narrow LED striplight series. This high quality luminaire is dedicated to the latest solid state lighting and electronic driver technology for optimal performance and energy efficiency.

The small size of the SNLED makes it an ideal choice for size restricted architectural applications. The SNLED Series can be the illumination solution in commercial, industrial, retail and residential applications. Fixtures can be used in storage/utility areas, coves, display cases, shops, tasks and general area lighting.

SPECIFICATION FEATURES

Construction

Channel is die formed cold rolled steel with numerous KOs for ease of installation. Groove for Tong Hanger. End plate quickly converts to snap-in channel connector for continuous row alignment. Channel/wireway cover secured with sheet metal screws.

Controls

Equipped standard with a 0-10V continuous dimming driver that works with any standard 0-10V control/dimmer. Combine with energy saving products like occupancy sensors, day lighting controls, and lighting relay panels to maximize energy savings. For motion control, reference options for both end and middle of the row applications. Standard dimming is 0-10V to 10% with 1%, step and Fifth Light DALI dimming options available.

Electrical

Long-Life LED system coupled with electrical driver to deliver optimal performance. LED's available in 3000K, 3500K, 4000K or 5000K with a minimum of 80 CRI and optional

90 CRI. Projected life based on TM21 rating up to L87 >60,000 hours. Electronic drivers are cULus recognized and available for 120-277V, 347V and 480V applications.

Emergency Battery Pack Option

Optional 120v-277v integral emergency battery pack is available in 7-watts or 14-watts to meet critical life-safety lighting requirements. The 90-minute batteries provide constant power to the LED system, ensuring code-compliance. A test switch/indicator button can be tested safely from the ground using a laser pointer, while the patented EZ Key prevents accidental discharge of the battery during construction. Emergency/generator transfer options available – see ordering information for details.

Installation

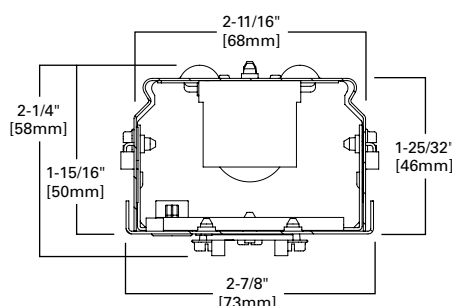
Fixture may be surface, pendant, or stem mounted. See accessories below (order separately).

Compliance

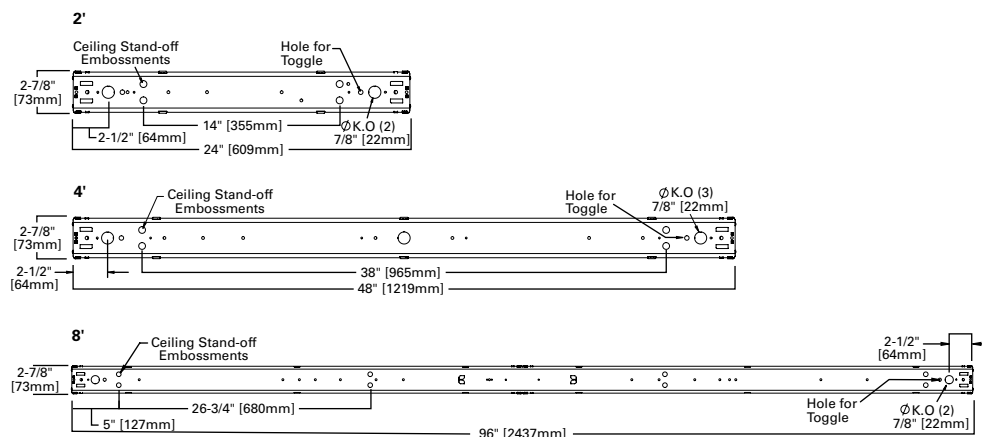
Indoor luminaires are cULus listed for -20°C to 40°C ambient environments, RoHS compliant, damp location listed, and comply with IESNA LM-79. LEDs comply with LM-80 standards. Drivers are NEMA 410 compliant. DesignLights Consortium® Qualified and classified for both DLC Standard and DLC Premium, refer to www.designlights.org for details. Can be used for State of California Title 24 high efficacy luminaire.

Warranty

Five-year warranty.



MOUNTING DATA



SNLED BASE LED

LED Striplight

powered by
fifthlight
technology



WATTAGE

| SNLED Type | Lumen Type | Length | Catalog Number | Nominal 3500K Lumens | Wattage | lm/W |
|------------|------------|--------|--------------------------------|----------------------|---------|-------|
| Base | Standard | 2 ft. | 2SNLED-LD5-20SL-UNV-L8XX-CD1-U | 2005 | 14 | 140.5 |
| Base | Standard | 2 ft. | 2SNLED-LD5-24SL-UNV-L8XX-CD1-U | 2476 | 18 | 136.8 |
| Base | Standard | 2 ft. | 2SNLED-LD5-28SL-UNV-L8XX-CD1-U | 2810 | 21 | 134.1 |
| Base | High | 2 ft. | 2SNLED-LD5-37HL-UNV-L8XX-CD1-U | 3799 | 27 | 143.0 |

| | | | | | | |
|------|----------|-------|--------------------------------|------|----|-------|
| Base | Standard | 4 ft. | 4SNLED-LD5-20SL-UNV-L8XX-CD1-U | 1934 | 13 | 148.4 |
| Base | Standard | 4 ft. | 4SNLED-LD5-24SL-UNV-L8XX-CD1-U | 2398 | 16 | 149.8 |
| Base | Standard | 4 ft. | 4SNLED-LD5-28SL-UNV-L8XX-CD1-U | 2761 | 18 | 149.7 |
| Base | Standard | 4 ft. | 4SNLED-LD5-32SL-UNV-L8XX-CD1-U | 3148 | 21 | 148.7 |
| Base | Standard | 4 ft. | 4SNLED-LD5-36SL-UNV-L8XX-CD1-U | 3649 | 25 | 146.6 |
| Base | Standard | 4 ft. | 4SNLED-LD5-40SL-UNV-L8XX-CD1-U | 4014 | 28 | 144.9 |
| Base | Standard | 4 ft. | 4SNLED-LD5-44SL-UNV-L8XX-CD1-U | 4367 | 31 | 142.9 |
| Base | Standard | 4 ft. | 4SNLED-LD5-48SL-UNV-L8XX-CD1-U | 4827 | 35 | 139.9 |
| Base | Standard | 4 ft. | 4SNLED-LD5-52SL-UNV-L8XX-CD1-U | 5167 | 38 | 137.4 |
| Base | Standard | 4 ft. | 4SNLED-LD5-56SL-UNV-L8XX-CD1-U | 5604 | 41 | 136.4 |
| Base | Standard | 4 ft. | 4SNLED-LD5-60SL-UNV-L8XX-CD1-U | 6015 | 46 | 130.4 |
| Base | Standard | 4 ft. | 4SNLED-LD5-64SL-UNV-L8XX-CD1-U | 6504 | 52 | 125.9 |
| Base | Standard | 4 ft. | 4SNLED-LD5-68SL-UNV-L8XX-CD1-U | 6781 | 55 | 123 |
| Base | High | 4 ft. | 4SNLED-LD5-56HL-UNV-L8XX-CD1-U | 5634 | 37 | 152 |
| Base | High | 4 ft. | 4SNLED-LD5-60HL-UNV-L8XX-CD1-U | 5894 | 39 | 150.9 |
| Base | High | 4 ft. | 4SNLED-LD5-64HL-UNV-L8XX-CD1-U | 6421 | 43 | 148.9 |
| Base | High | 4 ft. | 4SNLED-LD5-85HL-UNV-L8XX-CD1-U | 8471 | 62 | 136.3 |

| | | | | | | |
|------|----------|-------|----------------------------------|-------|-----|-------|
| Base | Standard | 8 ft. | 8TSNLED-LD5-64SL-UNV-L8XX-CD1-U | 6296 | 42 | 148.7 |
| Base | Standard | 8 ft. | 8TSNLED-LD5-72SL-UNV-L8XX-CD1-U | 7298 | 50 | 146.6 |
| Base | Standard | 8 ft. | 8TSNLED-LD5-80SL-UNV-L8XX-CD1-U | 8028 | 55 | 144.9 |
| Base | Standard | 8 ft. | 8TSNLED-LD5-88SL-UNV-L8XX-CD1-U | 8734 | 61 | 142.9 |
| Base | Standard | 8 ft. | 8TSNLED-LD5-96SL-UNV-L8XX-CD1-U | 9654 | 69 | 139.9 |
| Base | Standard | 8 ft. | 8TSNLED-LD5-104SL-UNV-L8XX-CD1-U | 10334 | 75 | 137.4 |
| Base | Standard | 8 ft. | 8TSNLED-LD5-112SL-UNV-L8XX-CD1-U | 11208 | 82 | 136.4 |
| Base | High | 8 ft. | 8TSNLED-LD5-130HL-UNV-L8XX-CD1-U | 12842 | 86 | 148.9 |
| Base | High | 8 ft. | 8TSNLED-LD5-170HL-UNV-L8XX-CD2-U | 16942 | 124 | 136.3 |

* Stocked in either 3500K or 4000K. Check Flash for stock availability.

PHOTOMETRICS

See website for IES/photometric files

CCT TABLE

| Approximate Color Temperature Multiplier | |
|--|------|
| 2700K | .93 |
| 3000K | .98 |
| 3500K | 1.0 |
| 4000K | 1.02 |
| 5000K | 1.02 |

CRI

| Lumen multiplier (80CRI to 90CRI) | | | |
|-----------------------------------|-------|-------|-------|
| 3000K | 3500K | 4000K | 5000K |
| 0.805 | 0.840 | 0.846 | 0.901 |

ORDERING INFORMATION

8T SNLED LD5 64SL UNV EL14W L835 CD 1 U

2=2' Length
4=4' Length
8T=8' Length

Series
SNLED=Commercial
LED Striplight⁽¹²⁾

Lamp Type
LD5=LED 5.0

Lumen Package⁽¹⁾

Stocked Lumen

Packages

24SL⁽¹³⁾28SL⁽¹³⁾

32SL

48SL

80SL

88SL

MTO Lumen

Packages

20SL⁽¹³⁾

36SL

37HL

40SL

44SL

52SL

56SL

56HL

60SL

60HL

64SL

64HL

68SL

72SL

85HL

96SL

104SL

112SL⁽¹⁵⁾130HL⁽¹⁵⁾170HL⁽¹⁴⁾

Voltage

UNV=Universal

Voltage 120-277

347=347V

480=480V⁽³⁾

Options

Emergency

EL7W=7-watt, 120V-277V emergency battery pack installed^{(3), (6)}EL14W=14-watt 120V-277V emergency battery pack installed^{(3), (6)}GTR2=Bodine Generator Transfer Relay⁽⁹⁾ETRD=Lota Emergency Transfer Relay with dimming control⁽⁹⁾

Wiring

PI/CPI=Plug in and cross over plug in options⁽¹¹⁾PC6/515P=(NEMA 5-15P) 6' Cord with NEMA Straight Plug^{(10), (11)}PC6/L715=(NEMA L7-15P) 6' Cord with NEMA Twist Plug^{(10), (11)}Motion Sensors⁽¹⁶⁾

LB-ERMS360=360° Low Bay Motion Sensor - End of Row

LB-MRMS360=360° Low Bay Motion Sensor - Middle of Row

HB-ERMS360=360° High Bay Motion Sensor - End of Row⁽⁴⁾HB-MRMS360=360° High Bay Motion Sensor - Middle of Row⁽⁴⁾

CCT/CRI

L830=3000K, 80 CRI

L835=3500K, 80 CRI

L840=4000K, 80 CRI

L850=5000K, 80 CRI

L930=3000K, 90 CRI

L935=3500K, 90 CRI

L940=4000K, 90 CRI

L950=5000K, 90 CRI

Driver Type

CD=0-10V Dimming Driver
(10% - 100% Dimming)HCD=0-10V Dimming Driver
(1% - 100% Dimming)SD=Step-dim (Bi Level)⁽³⁾

5LTD=Fifth Light (DALI)

Driver^{(3), (5)}

Number of Drivers

1=1 Driver

2=2 Drivers

Packaging

U=Unit Pack

ACCESSORIES

(Order Separately)

AYC=Chain/Set=36" Chain Hanger

(Use 1 set per fixture)

SCF=Fixed Stem Set (Specify Length)

SCS=Swivel Stem Set (Specify Length)

SCA=Adjustable 48" Stem Set

EYE CHAIN SET/3FT=Eye Bolt Chain

(Use 1 set per fixture)

WG/SNF-2FT=2' Wire Guard

WG/SNF-4FT=4' Wire Guard

A1B/Spacer-U=Spacer 1-1/2" to 2-1/2" from ceiling

(Use 2 per fixture)

TOGGLE=Single Toggle No. 2 (Specify Length)

Y-TOGGLE=Y Toggle No. 2 (Specify Length)

SNLED-LENS-LW-2FT-U=Replacement Lens 2 ft, Full Frost

SNLED-LENS-LN-2FT-U=Replacement Lens 2 ft, Semi Frost

SNLED-LENS-LC-2FT-U=Replacement Lens 2 ft, Clear

SNLED-LENS-LW-4FT-U=Replacement Lens 4 ft, Full Frost

SNLED-LENS-LN-4FT-U=Replacement Lens 4 ft, Semi Frost

SNLED-LENS-LC-4FT-U=Replacement Lens 4 ft, Clear

NOTES: ⁽¹⁾ Nominal lumen values. See table for values and fixture length. ⁽³⁾ 4 ft. and 8 ft. only. ⁽⁴⁾ Motion Sensor offers dimmability. ⁽⁵⁾ For a complete listing of Fifth Light products, visit www.eaton.com/lightingsystems ⁽⁶⁾ With integral test switch/indicator/laser test. For approximate delivered lumens multiply the lumens per watt of the desired fixture by the wattage of the emergency battery pack (100 lm/W x 7=700 lumens). IES-format photometry for luminaire under emergency operation available. ⁽⁹⁾ Used to bypass local control during outage. Must be used in conjunction with UL 1008 device (provided by others). GTR2 option includes 2 relays on fixtures with dimming drivers. ETRD option only requires one relay when used on a dimming fixture. Must specify voltage as 120V or 277V when ordering these devices. ⁽¹⁰⁾ Most common C&P shown. Must specify location for cord. All "end" locations will be on the end with sensor installed. ⁽¹¹⁾ Consult tech support on numerous options for this feature. ⁽¹²⁾ DesignLights Consortium® Qualified and classified for both DLC Standard and DLC Premium, refer to www.designlights.org for details. ⁽¹³⁾ Available in 2 ft. and 4 ft. ⁽¹⁴⁾ Requires two drivers. ⁽¹⁵⁾ DALI and Step-dim versions require two drivers. ⁽¹⁶⁾ Sensors provided in separate externally mounted enclosure. See SRL spec sheet for fully integrated/connected sensors.

Specifications & dimensions subject to change without notice. Consult your Eaton Representative for availability and ordering information.

SHIPPING DATA

| Length. | Wt. |
|---------|-----------|
| 2 ft. | 3.8 lbs. |
| 4 ft. | 7.2 lbs. |
| 8 ft. | 13.1 lbs. |