

COOPER LIGHTING - METALUX®

DESCRIPTION

The Metalux Horizon Recessed Wall Wash Series features recessed aesthetics and the latest in Energy Efficient Technology. The clean architectural design incorporates precision-formed aluminum reflector features that produces efficient, uniform and continuous vertical wall illumination.

The Horizon Recessed Wall Wash Series is specifically designed for effective use in various retail, merchandising and commercial wall washing environments. Horizon is ideal for retail displays, showrooms, corridor walls, art lighting and the elimination of the "Cave Effect" in office lighting applications.

SPECIFICATION FEATURES

Construction

Nominal 4-1/2" deep 10" x 2' housing designed for use with 40, 50 and 55 watt biaxial 17W T8 lamps. The housing is constructed of die formed code gauge prime cold rolled steel. Housing incorporates a longitudinal flange for grid installation or ceiling tile support. KO's for continuous row mounting.

Electrical*

Ballasts are CBM/ETL Class "P" and are positively secured. Biax models use 2G11 base lampholders with double-edge wiping action pressure lock contacts and lamp support clips. T8 models use pressure-lock lampholders. UL/CUL listed. Suitable for damp locations.

Finish

Electrostatically applied baked white polyester powder enamel finish. Multistage cleaning cycle, iron phosphate coating with rust inhibitor. Conveyorized application and baking timing accurately controlled an eleast vated temperature.

Reflector Optical Assembly

The internal aluminum reflector optical assembly incorporates an upper "Scoop" and lower "Kick" reflector design. This design produces uniform even illumination on vertical surfaces. Continuous illumination is maintained to the junction of the wall and the ceiling. Reflectors are precision manufactured from specular low iridescent aluminum in a computer-controlled operation.

Catalog #	RWW1BX40MI277EB51U	Type	
Project		Date	
Comments			
Prepared by			



RWW
1BX40
117
217

1' X 2'
RECESSED WALL WASH
BIAXIAL OR T8 LAMPS

Vertical Illumination
Luminaire

HORIZON™

ENERGY DATA

Input Watts:

Electronic Ballast & STD Lamps

1BX40 (43)
1BX50 (54)
1BX55 (60)
117 (19)
217 (34)

STD Ballast & STD Lamps

1BX40 (48)
117 (23)
217 (45)

ES Ballast & STD Lamps

117 (23)
217 (45)

*Reference the lamp/ballast data in the Technical Section for specific lamp/ballast requirements.

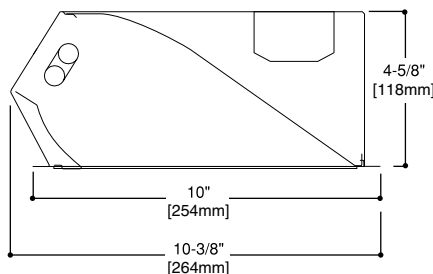
LAMPS CONTAIN MERCURY. DISPOSE ACCORDING TO LOCAL, STATE OR FEDERAL LAWS

LINEAR DISCONNECT

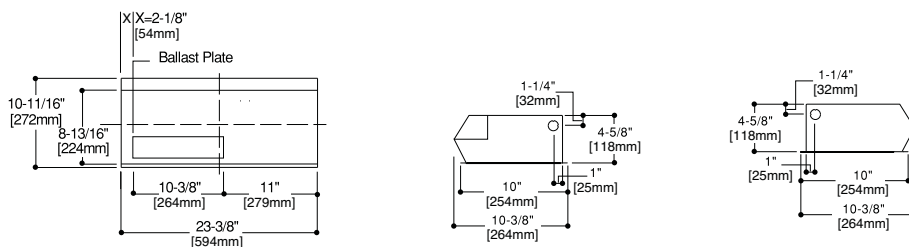
Safe and convenient means of disconnecting power.



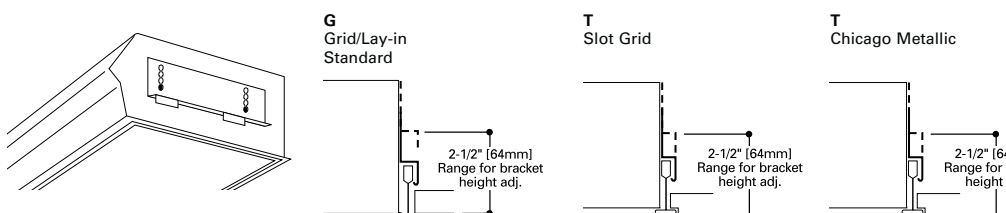
ADF020637
2014-03-31 09:05:35



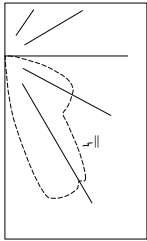
MOUNTING DATA



INSTALLATION DATA



Cooper Lighting
by **E.T.N.**



RWW-1BX40MI
Electronic Ballast
F14T5/835 Lamps
3150 Lumens
Efficiency 80.4%
Test Report
#167P117

Candlepower

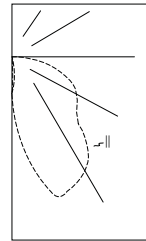
Angle	Along II	45°	Across ⊥
0	196	196	196
5	430	376	197
10	1051	674	195
15	1671	1245	192
20	1877	1637	187
25	1898	1753	182
30	1844	1772	174
35	1675	1713	164
40	1290	1624	154
45	1148	1380	145
50	1122	1056	133
55	1104	920	121
60	1074	851	109
65	1040	798	98
70	882	728	93
75	496	591	88
80	271	261	71
85	242	157	24
90	0	0	0

Zonal Lumen Summary

Zone	Lumens	%Lamp	%Fixture
0-30	526	16.7	20.7
0-40	979	31.1	38.6
0-60	1835	58.3	72.4
0-90	2534	80.4	100.0
0-180	2534	80.4	100.0

Coefficients of Utilization

rc	Effective floor cavity reflectance						20%												
	80%		70%		50%														
rw	70	50	30	10	70	50	30	10	50	30	10	50	30	10	0				
RCR	0	96	96	96	96	94	94	94	94	89	89	89	86	86	86	82	82	82	80
	1	87	83	79	76	85	81	78	75	78	75	73	75	72	70	72	70	68	67
	2	79	72	66	61	77	70	65	61	67	63	59	65	61	58	62	59	57	55
	3	72	63	56	51	70	62	55	50	59	54	49	57	52	48	55	51	48	46
	4	65	55	48	42	63	54	47	42	52	46	41	50	45	41	48	44	40	38
	5	59	48	41	35	57	47	40	35	46	39	34	44	38	34	42	37	34	32
	6	54	43	35	30	52	42	35	30	40	34	29	39	33	29	38	33	29	27
	7	50	38	31	25	48	37	30	25	36	30	25	35	29	25	34	29	25	23
	8	45	34	26	21	44	33	26	21	32	26	21	31	25	21	30	25	21	19
	9	42	30	23	18	40	29	23	18	29	22	18	28	22	18	27	22	18	16
	10	38	27	20	16	37	27	20	16	26	20	15	25	19	15	24	19	15	14



RWW-217MI
Electronic Ballast
F17T8/835 Lamps
1400 Lumens
Efficiency 66.9%
Test Report
#167P116

Candela

Angle	Along II	45°	Across ⊥
0	461	461	461
5	717	674	464
10	1023	964	458
15	1212	1078	447
20	1199	1177	429
25	1170	1140	406
30	1119	1091	378
35	1033	1029	351
40	913	950	321
45	799	853	286
50	734	721	247
55	685	613	205
60	637	532	163
65	547	472	120
70	436	399	79
75	314	295	42
80	211	184	15
85	107	86	3
90	0	0	0

Zonal Lumen Summary

Zone	Lumens	%Lamp	%Fixture
0-30	451	17.3	25.9
0-40	757	29.1	43.6
0-60	1337	51.4	76.9
0-90	1739	66.9	100.0
0-180	1739	66.9	100.0

Coefficients of Utilization

rc	Effective floor cavity reflectance						20%												
	80%		70%		50%														
rw	70	50	30	10	70	50	30	10	50	30	10	50	30	10	0				
RCR	0	80	80	80	80	78	78	78	78	74	74	74	71	71	71	68	68	68	67
	1	73	70	67	65	71	68	66	64	66	63	62	63	61	60	61	59	58	56
	2	67	61	57	53	65	60	56	52	58	54	51	55	53	50	53	51	49	47
	3	61	54	49	44	59	53	48	44	51	47	43	49	46	43	47	44	42	40
	4	56	48	42	38	54	47	42	37	45	41	37	44	40	36	42	39	36	34
	5	51	42	36	32	49	41	36	32	40	35	31	39	34	31	37	34	31	29
	6	47	38	32	27	45	37	31	27	36	31	27	35	30	27	34	30	27	25
	7	43	34	28	24	42	33	28	24	32	27	23	31	27	23	30	26	23	22
	8	40	30	24	20	38	30	24	20	29	24	20	28	23	20	27	23	20	19
	9	36	27	21	18	35	27	21	18	26	21	17	25	21	17	24	20	17	16
	10	34	25	19	15	33	24	19	15	24	19	15	23	18	15	22	18	15	14

WALL ILLUMINANCE

Individual Unit*									Multiple Units*												Continuous Row*															
	0'	1'	2'	3'	4'	5'	6'	7'	8'	4'				6'								0'	1'	2'	3'	4'	5'	6'	7'	8'						
Ceiling	8'	57	47	27	13	6	3	2	1	1	8'	72	66	60	66	72	62	52	35	28	35	52	62	8'	131	131	131	131	131	131	131	131	131			
	7'	54	46	31	17	10	5	3	2	1	7'	77	73	69	73	77	62	55	43	37	43	55	62	7'	146	146	146	147	147	147	147	147	147			
	6'	36	32	24	15	10	6	4	2	1	6'	59	58	57	58	60	44	42	37	33	36	42	44	6'	115	116	116	116	116	116	116	116	116			
	5'	29	27	21	14	9	6	4	3	2	5'	52	52	53	53	53	39	37	34	32	34	37	39	5'	104	105	105	105	106	106	106	106	106			
	4'	22	21	17	13	9	6	4	3	2	4'	44	45	45	45	45	32	31	30	29	30	31	32	4'	89	90	91	91	91	91	91	91	91			
	3'	15	15	13	10	8	5	4	3	2	3'	34	35	36	36	36	24	24	24	24	24	25	25	3'	70	71	72	72	72	72	72	72	72			
	2'	11	10	9	8	6	5	4	3	2	2'	27	28	28	29	29	19	19	19	19	20	20	20	2'	55	56	57	57	58	58	58	58	58			
	1'	8	8	7	6	5	4	3	3	2	1'	22	23	24	24	24	16	16	16	16	16	17	16	1'	46	47	48	48	48	49	49	49	49			
Floor																																				

*Units located 3' from wall. Data provided for RWW-232MI Unit. Fixture Location: 36" from center of luminaire to wall. Mounting Height: 9ft.

ORDERING INFORMATION

SAMPLE NUMBER: RWW-1BX40MI-120V-EB51-U

<p>Series RWW=Recessed Wall Wash</p>	<p>Louver Finish I= Semi-Specular/Haze (Low Iridescent) Standard MI= Specular/Mirrored (Low Iridescent)</p>	<p>Ballast Type Blank=Standard Magnetic Ballast (40W Biax only) EB8_=T8 Electronic Start. Total Harmonic Distortion < 10% EB8_/PLUS=T8 Electronic Start. Total Harmonic Distortion < 10%. High Ballast Factor > 1.15. ER8_=T8 Electronic Program Rapid Start. Total Harmonic Distortion < 10% EB5_=T5 Biax Electronic Instant Start Total Harmonic Distortion < 20%⁽⁵⁾ TEB5_=T5 Biax Electronic Instant Start Total Harmonic Distortion < 10%⁽⁵⁾ ER5_=T5 Biax Electronic Program Rapid Start. Total Harmonic Distortion < 10%</p>	<p>Options RLS=Rotor-Lock Socket (T8 Lamps Only)</p>	<p>Packaging U=Unit Pack PALC=Job Pack, in carton</p>
<p>Number of Lamps (Not included) 1=1-Lamp 2=2-Lamp</p>	<p>Voltage⁽¹⁾ 120V=120 Volt 277V=277 Volt 347V=347 Volt UNV=Universal Voltage 120-277⁽²⁾</p>	<p>Number of Ballasts 1=1 Ballast 2=2 Ballasts</p>	<p>Accessories TBW2=Thin White Baffle Accessory (2' Fixture)⁽²⁾ TBW4=Thin White Baffle Accessory (4' Fixture)⁽²⁾ CAL2=Clear Acrylic Lens (2' Fixture) CAL4=Clear Acrylic Lens (4' Fixture) DF-102-W=2' Version Drywall Frame Kit</p>	

NOTES: (1) Products also available in non-US voltages and frequencies for international markets. (2) UNV available in T5 and T8 linear only. Not available when specifying emergencies, voltage must be specific. (3) Electronic ballast only. (4) Biax only available in 1 lamp cross section. (5) NOT available in UNV voltages. Must specify voltage.

Specifications & dimensions subject to change without notice. Consult your Cooper Lighting Representative for availability and ordering information.

SHIPPING DATA

Catalog No.	Wt.
RWW-1BX40	11.0
RWW-117	11.0
RWW-217	11.0