

QUICKTRONIC® T12HO Rapid Start

Electronic Fluorescent Ballasts
 Universal Voltage (120-277V)

T12HO SYSTEMS

Item Number	Description	Input Current (AMPS)		Rated ² Lumens (lm)	No. of Lamps	Ballast Factor (BF)	System Lumens	Input Power (W)		System Efficacy (lm/W)		BEF ³
		@120/277V	Lamp ¹ Type					@120/277V	@120/277V	@120/277V	@120/277V	
75303	QTP2x96T12HO/UNV	1.57/0.67	F96T12HO	9050	2	0.89	15,385	189	81	0.47		
		1.27/0.55	F96T12HO/SS	8000	2	0.85	14,400	152	94	0.56		
		1.19/0.51	F72T12HO	6250	2	0.90	11,250	138	81	0.64		
		0.98/0.42	F60T12HO	5200	2	1.00	9360	116	80	0.86		
		0.82/0.35	F48T12HO	4050	2	0.90	7290	93	79	0.97		
		0.88/0.35	F96T12HO	9050	1	0.91	8325	100	83	0.91		

¹ Also compatible with other manufacturer's equivalent lamp types that meet ANSI standards.
² 96T12HO rated lamp lumens and performance data based on F96T12CW/HO/SS and F96T12/D41/HO series lamps.
³ Ballast Efficiency Factor (BEF) shown = (Ballast Factor x 100) divided by Input Power (Note: calculation based on lowest wattage value).
 75303 replaces discontinued item number 50319

Normal Ballast Factor

96 T12HO

Professional Series

Performance Guide

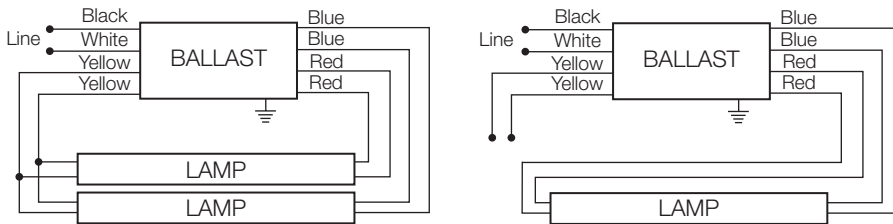


Specifications

Data based on F96T12HO

Starting Method: Rapid Start
Circuit Type: Series
Starting Temp:⁴ -20°F (-29°C) for F96T12HO; 60°F (16°C) for SUPERSAVER® F96T12HO/SS
Lamp CCF: Less than 1.7
Lamp Frequency: >20 kHz
Low THD: <10%
Voltage Range: ±10% of Rated Input
Input Frequency: 50/60 Hz
Power Factor: >98%
 cUL Listed Class P, Type 1 Outdoor
 75°C Max Case Temperature
 FCC 47CFR Part 18 Non-Consumer
 ANSI C62.41 Cat A. Transient Protection
 Remote Mounting: Contact OSI for remote mounting options.
 Class A Sound Rating
⁴ Operation below 50°F (10°C) may affect light output or lamp operation – see "Low Temp. Starting" definition.

QUICKTRONIC 2x96T12HO

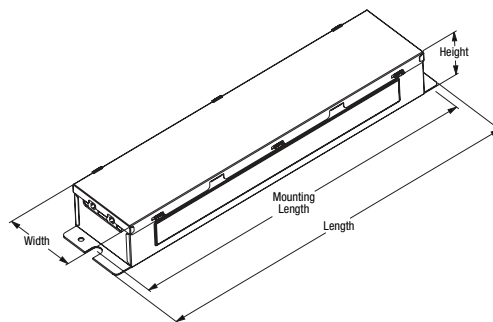


Note: For one lamp application, individually cap each yellow lead. Insulate to 600 volts.

Dimensions:
 Overall: 9.5" L x 1.7" W x 1.18" H
 Mounting: 8.9"

Packaging:
 Quantity: 4 pieces
 Weight: 1.38 lbs ea. (626 grams)

Wiring:
 Leads



System Life / Warranty

QUICKTRONIC products are covered by the QUICK 60+® warranty, a comprehensive warranty. For additional details, refer to the QUICK 60+ warranty bulletin.

Products distributed by LEDVANCE LLC

For Customer Service contact 1-800-LIGHTBULB

Item Number: 75303 QTP 2 x 96T12 / HO / UNV
 QUICKTRONIC
 Number of Lamps: Line Voltage (120-277V)
 System Type
 Primary Lamp Type

QUICKTRONIC® T12

Electronic Fluorescent Ballasts

40T12RS & 96T12IS Universal Voltage (120-277V)

Normal Ballast Factor

T12

Professional Series

Performance Guide



T12 SYSTEMS

Item Number	Description	Input Current (AMPS)	Lamp ¹ Type	Rated Lumens (lm)	No. of Lamps	Ballast Factor (BF)	System Lumens	Input Power (W)	System Efficacy ² (lm/W)	BEF ¹
		@120/277V						@120/277V	@120/277V	
75304	QTP2x40T12/UNV/RS/SC	0.56/0.24	F40T12/D30/ECO	3200	2	0.91	5630	67/67	76	1.36
		0.45/0.20	F34/D830/SS	2900	2	0.91	4930	54/54	78	1.69
		0.29/0.13	F40T12/D30/ECO	3200	1	0.91	2815	35/35	80	2.60
		0.24/0.11	F34/D830/SS	2900	1	0.91	2465	28/28	88	3.21
75305	QTP2x96/T12/UNV/IS	1.13/0.48	F96T12/D41/ECO	6420	2	0.88	11,040	135/132	82/84	0.65
		0.90/0.39	F96T12/CW/SS	5300	2	0.87	9220	108/106	85/87	0.81
		0.91/0.40	F72T12/CW	4500	2	0.92	8280	108/107	77/77	0.85
		0.55/0.25	F96T12/D41/ECO	6420	1	1.04	6485	84/82	77/79	1.24
		0.53/0.24	F96T12/CW/SS	5300	1	1.04	5830	70/68	83/86	1.49
		0.70/0.31	F72T12/CW	4500	1	1.05	4815	68/67	70/72	1.54

¹ Ballast Efficiency Factor (BEF) shown = (Ballast Factor x 100) divided by Input Power (Note: calculation based on lowest wattage value).

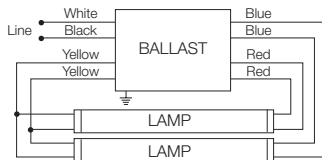
² System Efficacy calculation based on lowest input power value unless otherwise noted.

75304 replaces 50314

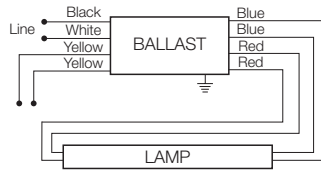
75305 replaces 50308

Also compatible with other manufacturer's equivalent lamp types that meet ANSI standards.

QTP 2x40T12 RS

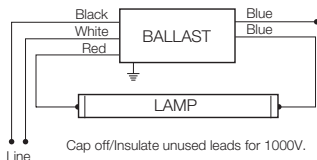


Ground Ballast and mount lamps within 1/2" of grounded metal reflector



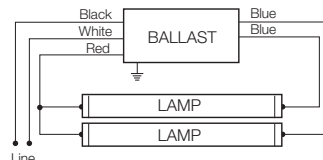
Note: For one lamp application, individually cap each yellow lead. Insulate to 600 volts.

QTP 2x96T12 IS



Note: For one lamp application, cap blue lead. Insulate to 1000 volts.

Ground Ballast and mount lamps within 1/2" of grounded metal reflector



Specifications

Data based on F40T12 for RS, F96T12 for IS

Starting Method:

RS - Rapid Start

IS - Instant Start

Circuit Type: RS - Parallel

IS - Parallel

Starting Temp: 50°F (10°C)

SUPERSAVER® Lamps: 60°F (16°C)

Input Frequency: 60 Hz

THD: QTP40T12/UNV RS: <10%;

QTP2x96T12 IS: <15%

Power Factor:

QTP40T12/UNV RS: >97%

QTP2x96T12 IS >0.96 (for F96T12);

>0.91 (for other lamps)

Input Voltage: ±10% of Rated Input

Lamp Crest Factor: <1.6

Lamp Frequency: >20 kHz

UL Listed Class P, Type 1 Outdoor

CSA or CUL Certified

70°C Max. Case Temp.

FCC 47CFR Part 18 Non-Consumer

Class A Sound Rating

ANSI C62.41 Cat A. Transient Protection

System Life / Warranty

QUICKTRONIC products are covered by the QUICK 60+® warranty. For additional details, refer to the QUICK 60+ warranty bulletin.

Products distributed by
LEDVANCE LLC

For Customer Service contact
1-800-LIGHTBULB

Dimensions:

Model QTP2x40T12/UNV/RS/SC enclosure size

Overall: 9.5" L x 1.3" W x 1.0" H

Mounting: 8.9"

Weight: 1.25 lbs ea. (approx.)

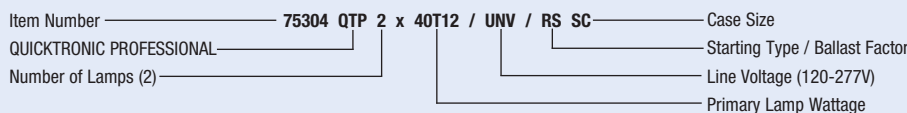
Dimensions:

Model QTP2x96T12/UNV/IS enclosure size

Overall: 9.5" L x 1.3" W x 1.0" H

Mounting: 8.9"

Weight: 4.67 lbs ea. (approx.)



SYLVANIA, QUICK 60+, QUICKSENSE, PROStart, POWERSENSE, and QUICKSTEP are registered trademarks of OSRAM SYLVANIA Inc. QUICK 7XL and QUICK 7XL+ are trademarks of OSRAM SYLVANIA Inc. OSRAM and QUICKTRONIC are registered trademarks of OSRAM GmbH. OCTRON, SUPERSAVER, XP, XPS, PENTRON, and ECOLOGIC are registered trademarks of LEDVANCE LLC. DULUX is a registered trademark of LEDVANCE GmbH. All other trademarks are those of their respective owners. Specifications subject to change without notice.

